

# BENDIGEM

The official newsletter of  
**Bendigo Gem Club Inc.**

October 2017

In this issue:

**Presidents Report**

**Expo 2017**

**What Am I?**

**General News**



Bendigo Gem Club Inc.  
10 Galvin Street, BENDIGO  
Victoria 3550  
Reg A 0000448C

[www.gembendigo.org.au](http://www.gembendigo.org.au)  
Enquiries: [secretary@gembendigo.org.au](mailto:secretary@gembendigo.org.au)  
 BendigoGemClub


# Bendigo Gem Club

## Postal Address:

10 Galvin St  
Bendigo  
Victoria 3550

## Club Contacts:

03 5442 3691  
www.gembendigo.org.au

 facebook.com/BendigoGemClub  
facebook.com/groups/gemarama/?fref=ts

## Executive Committee

### President

Alan Martin 0436 381 329  
president@gembendigo.org.au

### Vice President

Charlie Bock

### Secretary

Lea Smith  
secretary@gembendigo.org.au

### Treasurer

Nathan Wingrave  
treasurer@gembendigo.org.au

## Extra Committee Members

### Social Secretary

Edith Oakes 5447 0014  
Sandra Anderson 5443 3479  
Neil Anderson 5443 3479  
John Carey 5443 7135

### EXPO Coordinator

Andie Downing 0427 755 205  
andie@bendigoeventmanagement.com.au

### Field Trip Officer

Currently Vacant

### Workshop Manager

Neale Anderson 5443 3479

### Bendigem Editor

Lea Smith 5444 4179  
lea.smith@bendimail.com

## Maintenance Officers

Charlie Bock

## Mineral Reps

Pat Sutton 5441 5656  
John Carey (see above)

## Club Fees 2016

### Joining Fee

\$30 one off

### Name Tags

\$10

### Yearly Membership

\$30/Single  
\$40/Family  
\$15/Associate

### Adult Workshop Fees

Full day \$6.00  
Half/Part day \$3.00  
Evenings \$3.00

### Workshop Times:

Tues. evenings  
5-7 p.m.  
John Carey and Peter Covington

6-8:30p.m.  
John Care

Thurs.  
10 a.m. - 4 p.m.  
Instructors in all fields

Thurs. nights  
7-10 p.m.  
Kate Middleton

## Committee Meetings

3rd Thursday at 7:00 p.m.  
All members WELCOME

## Annual General Meeting

3rd Friday in November Unless stated otherwise.

# Presidents Report

This years expo was a great success, with plenty of patronage, and great displays

Being our Ruby and Gold anniversaries, the theme was, of course, Ruby and Gold. The showcase displays were magnificent with lots of Rubies and Gold on show. Thanks to for going to a lot of effort to put the Ruby display together

We have had quite a few new members join in the last 2 to 3 months with more signing up at the expo, welcome to the club and I hope you enjoy your time with us. This is great for the club as we continue to grow.

I would like to take this opportunity to thank all those who helped with the expo. We couldnt do it without our members help, so Thank You.

The Annual General Meeting will be held on Friday 17th November at 7pm. I would encourage all members to attend and please put yourself forward and nominate for a position on the committee, we need new people to take up the baton and help run the club. Please bring a plate for supper after the meeting.

AI

## Expo 2017

Our annual Gem and Mineral Expo was held on Saturday the 9th and Sunday 110h of September. With a great mix of gems, minerals, fossils and jewellery meant there was something for everyone. With a few changes in layout from previous years, we were able to have more traders and promote more products.



Once again the gem fossicking trailer was well utilised with plenty of kids digging in the sand to see what they could find. There was some very nice stones coming out of the trailer. Thanks to David Bannon for a great event.



Bendigo Gold was on site again this year with the gold panning trailer. We also had a metal detecting area to try your hand at, or learn about finding gold.



We had a number of demonstrations across the weekend in facetting, caboching, casting and jewellery making which were well received and seemed to generate a lot of interest. The demonstrations have certainly helped in generating new interest in the club with a couple of new members signing up right there and then!!

# Expo (cont.)



The showcases again this year were outstanding. Special thanks to Janet for her excellent work with the Ruby showcase. Janet certainly made it look spectacular. Thanks very much Janet.

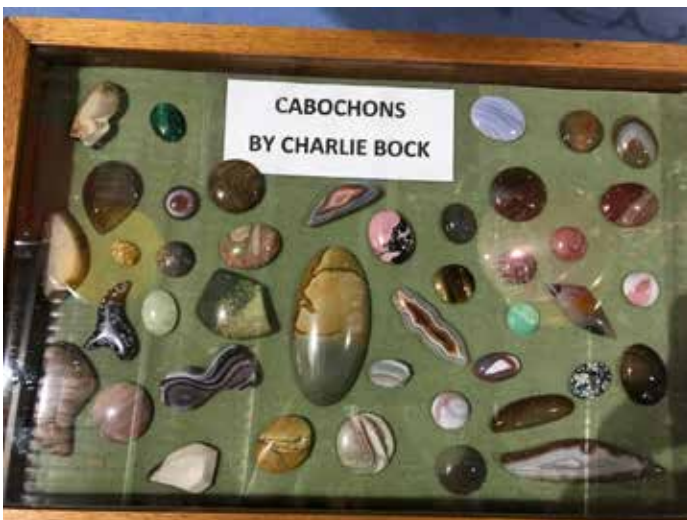


Thanks to Sandra and Linda who helped at the door and sold raffle tickets. There were some great prizes this year, and plenty of draws so everyone had an opportunity to win something.



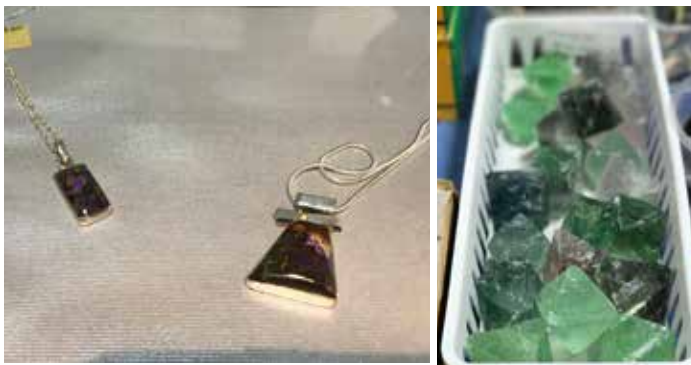
## Expo (cont.)

Our own mineral table was very busy selling lots of minerals. With club members donating their time to go out and find minerals and crystals for sale on the mineral table.



## Expo (cont.)

Overall a great expo. A wide variety of stalls, activities for the kids (including the big kids) with good food and coffee and good weather made the weekend a success. A bit of time off and then straight into planning for next years event. A very big thank you to Andie for all the work she put into organising the event and to everyone who helped out.



### Social Secretary Report

Thank you very much to the people who donated items for the raffle, Charlie, Edith, Peter, Janet B & Neale. The winner was Nicole, 2nd was Ann, both club members, 3rd was Lisa Weston, 4th Zoe Beaman and Ange Vaughan.

Thank you to Frankie and Sharleen who relieved me on the two days and to all the people who sold books prior to the exhibition.

Sandra Anderson

# General Information

## What Am I?



What do you think I am?

Answer next edition  
Last months gem was a red burmese spinel crystal.

## Silver Casting Dates

Silver Casting Dates for 2017 are:

**18th Nov**

Please register on the form at the club

## Field Trips

The field trip officer position is currently vacant, if you are interested in taking up this position please let us know.

If anyone has any suggestions for a field trip, please contact the president.

## Upcoming Events

### October

21-22 Nunawading & District Lapidary Club, Dorset Primary School, Rescorla Ave, Croydon  
contact Phil Toland 9761 3169

29 Warragul Lapidary Club Rock Market, Logan Park Warraagul, Contact Karen 0438 283 238

### November

4-5 Geelong Gem & Mineral Club Inc. Annual Exhibition. Centenary Hall, Cox Road, Norlane  
Zeehan Gem & Mineral Fair, Zeehan Primary School, Belstead St, Zeehan

17 Committe Meeting. Club Rooms. 7.00pm

**18 AGM (Including election of officers) Club Rooms. 7.00**

19 Cheong Park Gem & Mineral Club Rock Swap, Crn Bayswater & Eastfield Rds, Croydon Sth

25 Australian Fine Mineral Show, Melbourne Go to [www.afm.com.au](http://www.afm.com.au) for more details.

### December

**4 Christmas Party, Queens Arms, 6.30 for 7.00pm start**

**15 End of year committee meeting. Club Rooms. 7.00pm**

### Gemborees

2018 Willunga, South Australia

2019 Queensland, 2020 Victoria



## Our supporters

*Quality Gem Rough Supplies*



*Glenn Huntley*

BOX 3841, MARSFIELD, N.S.W. AUSTRALIA. 2122

Ph: (02) 9888 1261 Fax: (02) 9888 1063  
Email: qualitygemrough@gmail.com Mobile: 0427 945 087



MARTIN RUFFELL  
MASTER JEWELLER

16 Mitchell Street, Bendigo, Vic 3550  
PH: 54435755  
E: ruffelljewellers@gmail.com

 FIND US ON FACEBOOK

### Martin and David Ruffell Qualified Jewellers

Ph: (03) 5443 5755  
16 Mitchell St. Bendigo

Cutom Made, Restorations - Ring resizing  
Claw Retipping - Chain & Bracelet repairs  
Bendigo Gold & Opals - Diamond Specialists  
- Pearl rethreading - Deisgn service

**bendimail**   
*flexible mail solutions*

Designed & Printed  
by Bendimail  
Bulk Mail Specialists

68 Belle Vue Road, Golden Square, Vic, 3554  
Ph: (03) 5444 4179 - [www.bendimail.com.au](http://www.bendimail.com.au)  
Email: [lea.smith@bendimail.com](mailto:lea.smith@bendimail.com)



### WOLF'S GEMS

CRYSTALS GEMSTONES  
MINERALS AND CUTTING ROUGH  
ALSO OPAL



67 CLARKE AVE  
ST.ALBANS VIC.3021

BY APPOINTMENT ONLY  
MONDAY TO FRIDAY  
FROM 10 AM TO 5 PM

TEL.03 9366 6956  
MOB. 0402 444 362  
E-mail [wnoack@dcsi.net.au](mailto:wnoack@dcsi.net.au)



Bendigo Gem Club Inc.  
10 Galvin Street, BENDIGO  
Victoria 3550  
Reg A 0000448C

[www.gembendigo.org.au](http://www.gembendigo.org.au)  
Enquiries: [secretary@gembendigo.org.au](mailto:secretary@gembendigo.org.au)  
 BendigoGemClub